



Epilio Jessie for IBM Lotus Sametime

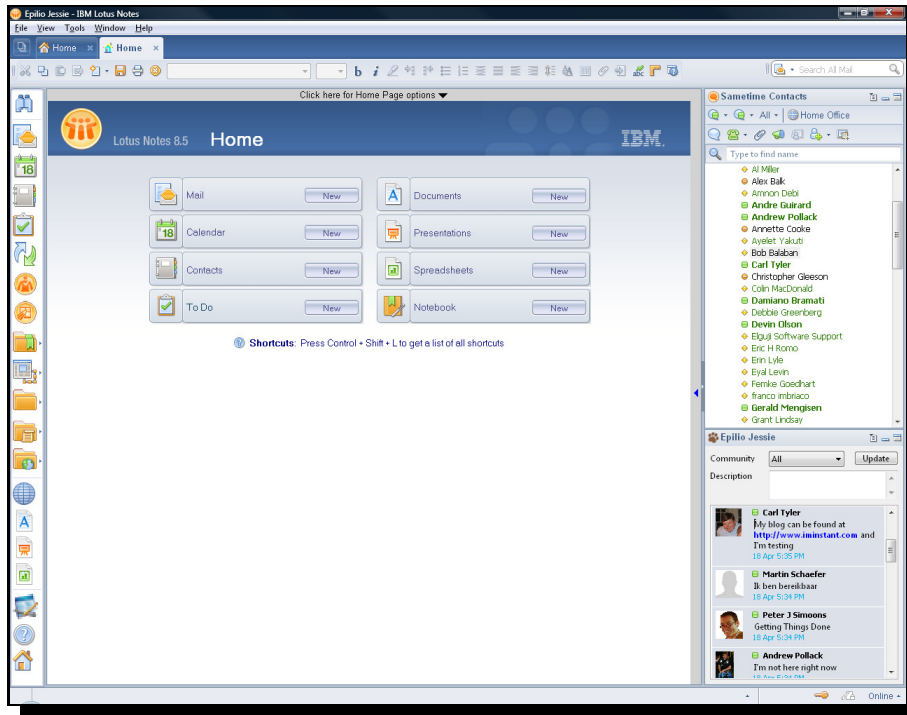
Telephone: 1-866-9EPILIO

<http://www.epilio.com>

Last revision April 18, 2009

Introduction

Epilio Jessie is a Lotus Sametime plug-in that allows you to use your Sametime status descriptions as an enterprise Twitter engine. Epilio Jessie is named after our office mascot and black lab. Jessie the lab and Jessie the plug-in share a number traits, Jessie the lab follows us around paying close attention to what we're doing. Jessie the plug-in is the same, it follows the users on your buddylist, showing their status descriptions as they change throughout the day.



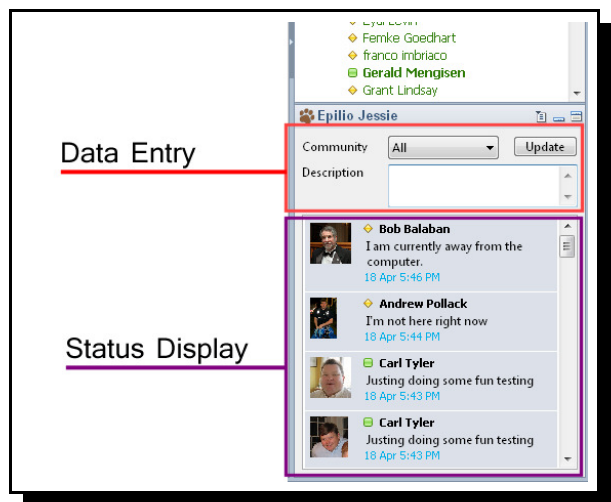
The Epilio Jessie Panel

The Epilio Jessie panel consists of two areas, the data entry area and the status display area.

The Data Entry area is where you can enter a status description update. The benefit of adding the update here is that the description does not get saved in your frequently used status description list.

The Community drop down allows you to select if you want this update for a specific community. Leaving it on the default option All, will apply the status description update to all the communities you are logged into.

The Update button submits the status description update, the same effect as pressing enter when entering a status description in the

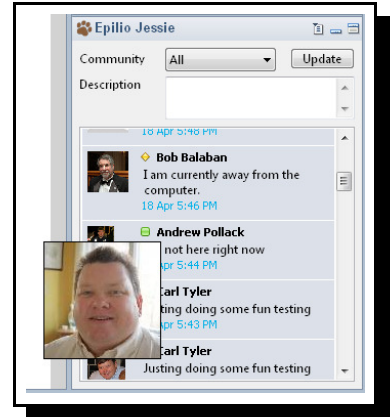


Description entry box. If you want to put in a new line separator in a description, use Shift+Enter.

Names from your buddylist can be dragged and dropped into the description area, where the users display name will be entered where the insertion point was before the drag and drop operation was initiated.

Web Links that are typed into the description will be click -able when viewed in the Epilio Jessie status Display area.

As with the Sametime buddylist, if you hover over a users picture, a larger version will be displayed. If you right click on a users name you will get the default buddylist right menu options.



The Status Display area shows the status changes for any Sametime user that is on your buddylist, whether in a private group or a public group. There is currently no way to specify users that not to follow. However you can set Epilio Jessie to ignore update messages that contain certain text or phrases. For example, you probably don't want to see an update every time someone logs on and their status description is set to "I am available", Epilio Jessie ships with a number of default settings, these can be modified through the Epilio Jessie Preferences panel.

Epilio Jessie Preferences

The Epilio Jessie preferences allow you to change a number of options, the status descriptions to ignore, the number of status descriptions to display in the status area. If you should experience any issues, logging for support can also be enabled here.

